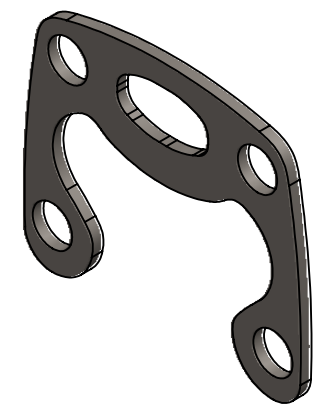
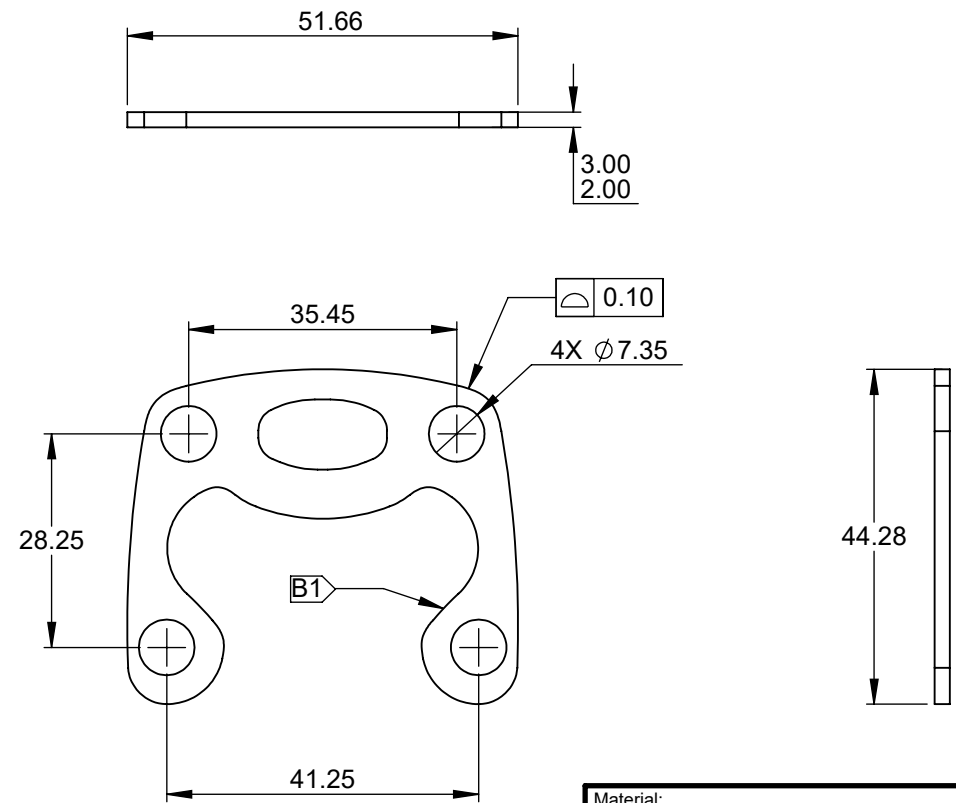

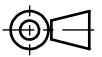


REVISIONS		
REV.	DESCRIPTION	DATE
A1	RELEASED FOR QUOTATION	2015-09-19
B1	CHANGED FILLET SIZES AND TYPES	2015-10-12



UNLESS OTHERWISE STATED
DEBURR AND REMOVE ALL SHARP EDGES

Material: Cold Rolled Steel		This drawing and any information or descriptive material set out on it are completely open source, from Moocow Unicycles. Please continue supporting free and open technical information!	Description: Handle Reinforcement		
Finish: Powder Coated			Drawn by: David	Drawn Date: 2016-01-05	
Unless Otherwise Stated: Linear Tol.: ±0.2, Angular Tol.: 0°15' All Dimensions: mm			Checked/Approved by: David	Checked/Approved Date: 2016-01-05	
Drawing Scale: 1:1		Design created by: Just Moo it  Moocow Unicycles, David@moocowunicycles.com	Part Name: Moocow-Handle Reinforcement v2		
Approx Weight: 14.68 g	Drawing Produced In Accordance With: BS8888		Drawing Number: HR-1016		
Projection Method: THIRD ANGLE 			Sheet Size: A4		Sheet: 1 of 2
					Revision: B1

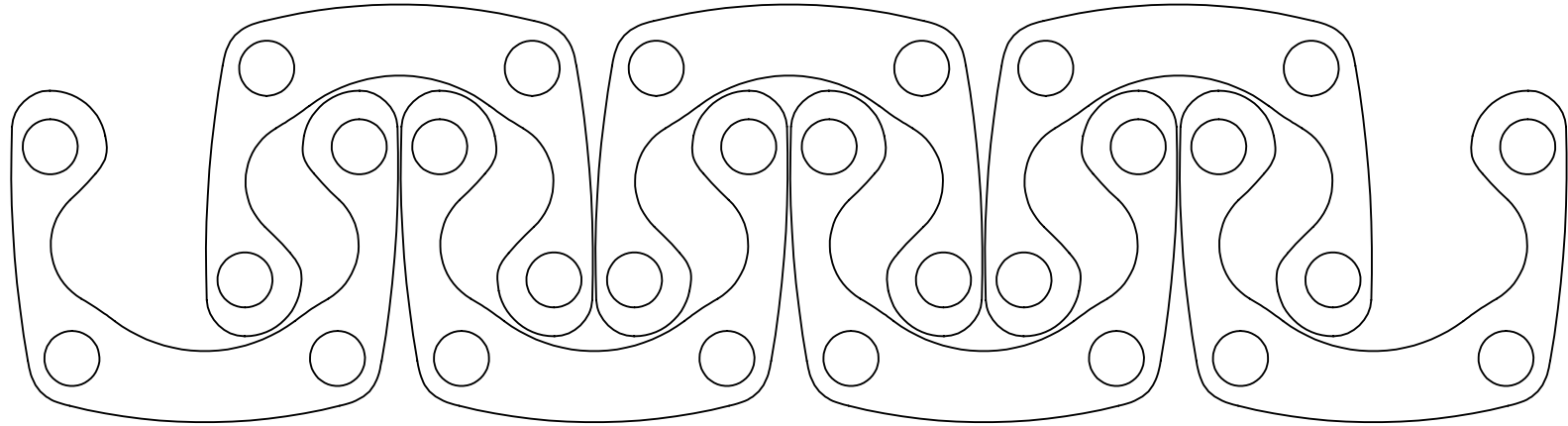
1 2 3 4 5 6

A


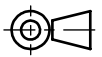
B

C

D



PART CAN BE NESTED TO MINIMIZE MATERIAL WASTE

Material: Cold Rolled Steel		This drawing and any information or descriptive material set out on it are completely open source, from Moocow Unicycles. Please continue supporting free and open technical information!	Description: Handle Reinforcement		
Finish: Powder Coated			Drawn by: David	Drawn Date: 2016-01-05	
Unless Otherwise Stated: Linear Tol.: ± 0.2 , Angular Tol.: $0^{\circ}15'$ All Dimensions: mm			Checked/Approved by: David	Checked/Approved Date: 2016-01-05	
Drawing Scale: 1:1		Design created by:  Just Moo it Moocow Unicycles, David@moocowunicycles.com	Part Name: Moocow-Handle Reinforcement v2		
Approx Weight: 14.68 g	Drawing Produced In Accordance With: BS8888		Drawing Number: HR-1016		
Projection Method: THIRD ANGLE 	Sheet Size: A4		Sheet: 2 of 2	Revision: B1	